

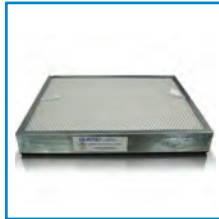
# SolderPure HC / HD / HP

## HIGH CAPACITY FUME EXTRACTOR

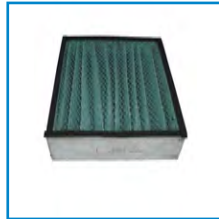
High capacity solder fume extractor, ideal for low debris generating applications, the SolderPure HC is powered by a medium pressure motorized brushless impeller and equipped with a multi-stage filtration system (pre-filter, HEPA and chemical filter).



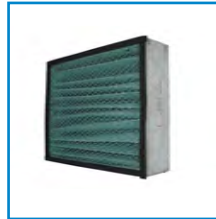
2" Pleated Filter F071



2" HEPA Filter F074



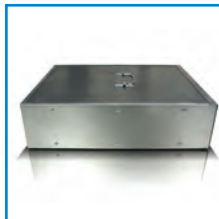
4" High Capacity Filter F164



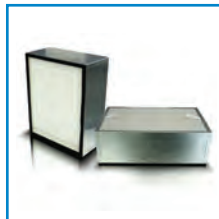
6" High Capacity Filter F173



2" Chemical Filter F072-GPC



4" Carbon Filter F077-GPC



6" HEPA Filter F075



APPLICATION	FILTER SEQUENCE	EFFICIENCY	CFM	POWER REQUIREMENTS	DIMENSIONS (HXWXD)	SHIPPING WEIGHT	PART #
GAS/ODOR AND PARTICLES/DUST	4" High Capacity Filter F164	MERV 12	300 Nominal	120V/1PH/60Hz 2A	27.5x13x16 in 51x33x40 cm	48 lbs 22 kg	SPB560HC-1B*
	2" Carbon Filter F072-GPC 6" HEPA Filter F075	N/A MERV 17		230V/1PH/50Hz 1A			SPB550HC-1B*
HEAVY GAS/ODOR ONLY	2" Pleated Filter F071 4" Carbon Filter F077-GPC 6" HEPA Filter F075	MERV 10 N/A MERV 17	300 Nominal	120V/1PH/60Hz 2A 230V/1PH/50Hz 1A	27.5x13x16 in 51x33x40 cm	48 lbs 22 kg	SPB560HD-1B* SPB550HD-1B*
PARTICLES/DUST ONLY	6" High Capacity Filter F173 6" HEPA Filter F075	MERV 12 MERV 17	300 Nominal	120V/1PH/60Hz 2A 230V/1PH/50Hz 1A	27.5x13x16 in 51x33x40 cm	48 lbs 22 kg	SPB560HP-1B* SPB550HP-1B*

### FILTERS

- 2" Pleated Filter (box of 6)
- 2" HEPA Filter, 99,97% efficiency at 0.3µm
- 6" HEPA Filter, 99,97% efficiency at 0.3µm
- 2" Chemical Filter with Media
- 4" Chemical Filter with Media
- 4" High Capacity Filter
- 6" High Capacity Filter

### PART #

- F071
- F074
- F075
- F072-GPC
- F077-GPC
- F164
- F173

**!** NOTE: Quatro products are NOT INTENDED for use with explosive or flammable substances or environments. Refer to your MSDS sheets for details and guidance.

\* Standard configuration: **unit only, no arm**  
Add "**G**" at the end of the part number for unit with one (1) **unit mounted arm**  
Add "**K**" at the end of the part number for unit with one (1) **table mounted arm**

### OPTIONS & ACCESSORIES

- Dual 3" (standard), or 4" Inlets
- 4" Exhaust discharge kit
- Custom chemical filter
- Source capture arms: unit / table mounted
- Remote foot-switch
- Remote hand-switch
- Casters

### PART #

- Contact Us
- Contact Us
- Contact Us
- AA005 / AA062
- AA175
- AA375
- AR188

